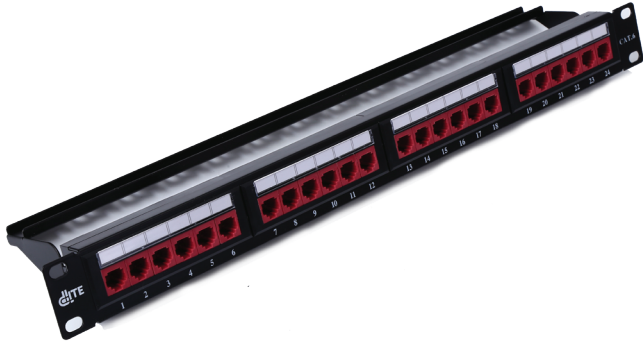


CAT6 UTP PCB PATCH PANEL - DC6UTP-PP-24

dLite Category 6 Printed Circuit Board (PCB) Unshielded Twisted Pair (UTP) patch panels conform to class E performance. The PCB is fully sealed for extra protection, and in-line IDC blocks. Wiring diagram assists termination to either 568A or B wiring standards. Available in 1U 24 ports or 2U 48 ports. All panels are supplied with rear cable management bars and fixings.

FEATURES

- ✓ Conform to IEC, EIA-TIA performance requirements
- ✓ 110 style IDC punch down type
- ✓ 19" rack mountable
- ✓ Supplied with rear cable manager
- ✓ Available in 1U 24port and 2U 48port
- ✓ Removable port identification labelling


APPLICATIONS

- ✓ Supports category 6 (Class E) networks running up to 250MHz applications
- ✓ Backwards compatible with category 5e distribution systems

SPECIFICATIONS

Parameters	Value
Height	44.4mm
Width	482.6mm
Housing Material	Cold Rolled Steel, ABS- UL94V-2
IDC Material	Phosphor Bronze with Nickel Plating
Contact Material	PC UL94V-2 Contact: Bronze + Gold Plating
RJ45 Jack Life	Min. 750 Insertions
IDC Life	Min. 200 Terminations
Termination Wiring	TIA-568A or TIA-568B
Operating Temperature	-10°C / +60°C
Compliance	ANSI/TIA-568-C.2, ISO 11801, IEC 60603-7
RoHS	Compliant
Warranty	12 Months
Depth	134mm
Panel Frame	Cold Rolled Steel, Powder Coating

ORDER INFORMATION

Product	Part Number	Product Description
	DC6UTP-PP-24	Cat6 UTP 24 port Patch panel,1U