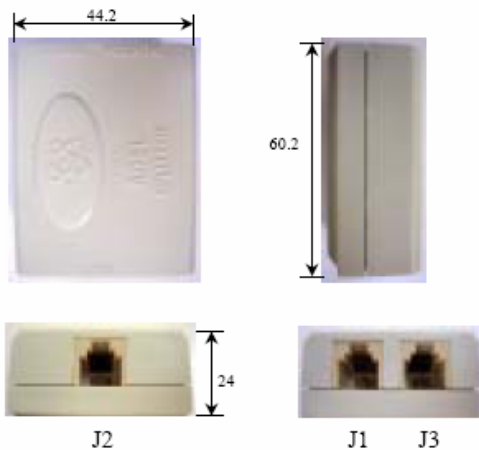




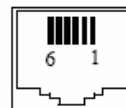
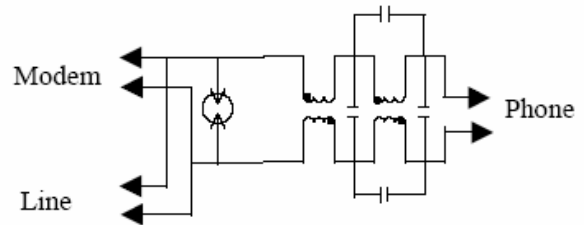
- ★ Compact package, includes connectors for ease of installation
- ★ Design for G.dmt Application
- ★ 100 mA DC Loop Current Capacity

Specifications		(Operating Temperature 5~40°C, Relative Humidity 20~90%)	
POTS Port Impedance	600Ω	DC Resistance each line	25 Ω Max
Insertion Loss @1KHz	-1dB Max	Longitudinal Balance 0.2 ~1KHz	-58 dB Min
3dB Cutoff Frequency	12KHz Typ	1KHz~3KHz	-53 dB Min
Insertion Loss Distortion (dB)		Isolation resistance tip/ring	5M ohm Min
200Hz~4KHz	+/-1 dB	POTS trip and ring DC Voltage	0-105V
Attenuation @30K~300KHz	-60dB Min	Delay Distortion @0.6-3.2KHz	200uS Max
@300K~12MHz	-55dB Min	@0.2-4.0KHz	250uS Max
Return Loss 300Hz~500Hz	-14 dB Min		
500Hz~2KHz	-18 dB Min		
2KHz~3.4KHz	-14 dB Min		

Dimension



Schematic



RJ11



Connector	Function	Style	Tip	Ring
J1	Modem	RJ11	Pin3	Pin4
J2	Line	RJ11	Pin3	Pin4
J3	Phone	RJ11	Pin3	Pin4

Note

1. Data sheet subject to change without notice
2. RoHS printed for Lead Free product Add "LF" (LF-AS2021) to order Lead Free product