



POWERLINE HD 4-PORT ETHERNET ADAPTER

BROADBAND SPEED OVER ELECTRICAL WIRING

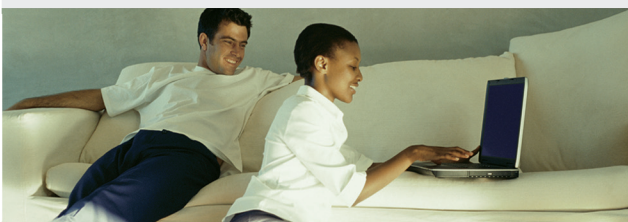
Offers up to 200Mbps over home electrical wiring for high-bandwidth Internet applications

QUALITY OF SERVICE

Prioritized traffic for smooth streaming multimedia, online games, and VoIP calls

SECURITY MADE EASY

Data encryption to prevent unauthorized network access and simple Network ID configuration at the push of a button



DATA TRANSMISSION OVER ELECTRICAL WIRING

The D-Link DHP-342 Powerline HD 4-Port Ethernet Adapter uses your home's existing electrical wiring to create a network or extend your existing network¹. Every contiguous power outlet becomes a potential network port for easily connecting digital media devices, game consoles, print servers, computers and network storage devices throughout your home.

IDEAL FOR BANDWIDTH INTENSIVE APPLICATIONS

The DHP-342 is capable of delivering data transfer rates of up to 200Mbps². This rapid transmission speed is suitable for bandwidth-intensive applications such as HD video streaming, VoIP calls, and lag-free online gaming experiences. In addition, the DHP-342's Quality of Service (QoS) technology prioritizes Internet traffic, ensuring that multimedia applications will not experience performance degradation while web surfing and file downloads are in progress.

CONVENIENT CONNECTION AND SECURE OPERATION

D-Link's Powerline 4-Port HD Ethernet Adapter plugs directly into a wall outlet. Four LAN ports allow you to connect multiple Ethernet devices and network them with other powerline adapters throughout the home. The network ID on the device can be quickly and conveniently configured at the push of a button. 3DES data encryption protects the powerline network from intruder wire-tapping.

POWER SAVING FEATURES

The DHP-342 implements a power saving mode to help conserve energy. If no data transmission or reception occurs over a specified period of time, the adapter will automatically go into sleep mode to save power. The built-in 4 port switch also helps to save energy by eliminating the need for an additional network hub/switch.

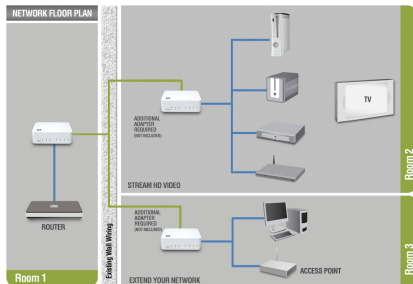
WHAT THIS PRODUCT DOES

D-Link's DHP-342 Powerline HD 4-Port Ethernet Adapter allows you to connect networking devices using the electrical wiring throughout your house. The 200Mbps speed allows you to share an Internet connection and experience smooth file transfers, media streaming, online gaming and more. D-Link's Powerline HD Ethernet Adapter features easy plug-and-play installation and can be used with any Ethernet-enabled device.

FAST TRANSMISSION OVER POWER LINES THROUGHOUT THE HOME

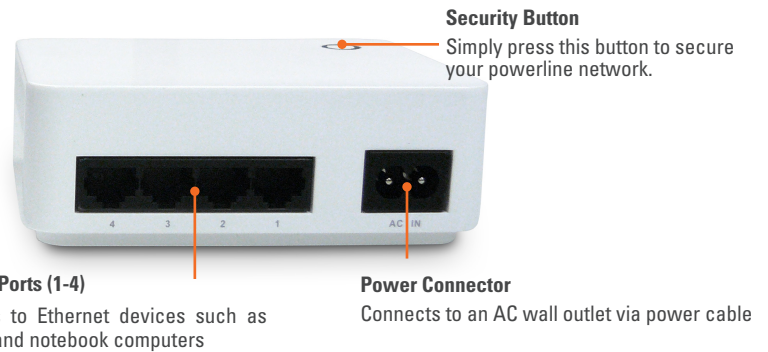
D-Link's Powerline HD Ethernet Adapters deliver up to 200Mbps over the pre-existing electrical wiring in a building. This fast transmission speed provides ample bandwidth suitable for streaming high-quality video HDTV signals, while simultaneously providing high-speed Internet access throughout an entire home. Using Quality of Service (QoS) technology, this adapter is able to ensure that low-priority traffic does not interfere with bandwidth-sensitive applications such as VoIP phone calls and online games.

YOUR NETWORK SETUP



A minimum of two D-Link PowerLine HD Network Adapters are required to create a network.

DHP-342



TECHNICAL SPECIFICATIONS

MINIMUM SYSTEM REQUIREMENTS

- (For PC Utility Software)
- PC with 200MHz processor
 - 64MB memory
 - Windows Vista, XP SP2 or 2000 SP4
 - Ethernet interface (100Mbps)

STANDARDS

- IEEE 802.3
- IEEE 802.3u

POWERLINE INTERFACE

- Power cable (country-dependent)

ETHERNET INTERFACE

- Four (4) 10/100BASE-TX Ethernet Ports with auto MDI/ MDIX
- RJ-45 Connector

POWERLINE MODULATION SCHEME

- OFDM Symbol Modulation

POWERLINE FREQUENCY BAND

- 2MHz to 32MHz

DATA RATE

- Powerline: 200Mbps (PHY rate)
- Ethernet: 10/100Mbps (auto-negotiation)

QoS

- 802.1P Priority Queues standard

SECURITY

- 3DES data encryption
- Net ID

LEDs

- Power
- AP
- Ethernet
- Throughput

POWER INPUT

- 100 to 240 VAC, 50/60Hz

POWER CONSUMPTION

- Power saving mode supported

DIMENSIONS (L x W x H)

- 120 x 90 x 43 mm

WEIGHT

- 284 grams (0.63 lbs)

OPERATING TEMPERATURE

- 0° to 40° C (30° to 104° F)

STORAGE TEMPERATURE

- -20° to 70° C (-4° to 158° F)

STORAGE HUMIDITY

- 10% to 95% non-condensing

EMC CERTIFICATION

- FCC Part 15 Class B
- CE Class B

SAFETY CERTIFICATION

- UL

¹ Power outlets and electrical wiring must all be part of the same electrical system. Certain electrical conditions in your home, such as wiring condition and configuration, may affect the performance of this product. Additional D-Link Powerline HD adapters required to add new devices to the network. A minimum of two D-Link Powerline HD Ethernet adapters or switches are required to create a network. Connecting this product to a power strip with a surge protector may adversely affect the performance of this product. For best results, plug adapter directly into a wall outlet.

² Maximum throughput based on theoretical transmission PHY rate. Actual data throughput will vary. Network conditions and environmental factors, including volume of traffic and network overhead, may lower actual data throughput rate. Interference from devices that emit electrical noise, such as vacuum cleaners and hair dryers, may adversely affect the performance of this product. This product may interfere with devices such as lighting systems that have a dimmer switch or a touch-sensitive on/off feature, short wave radios, or other Powerline devices that do not follow the Universal Powerline Association (UPA) standard.



D-Link Corporation

No. 289 Xinhu 3rd Road, Neihu, Taipei 114, Taiwan
Specifications are subject to change without notice.

D-Link is a registered trademark of D-Link Corporation and its overseas subsidiaries.
All other trademarks belong to their respective owners.

©2009 D-Link Corporation. All rights reserved.
Release 01 (June 2009)