

## L2 Ethernet Stack

### Access Layer Switch

- Choices of 24 and 48 Ethernet Ports
- 2 Combo 1000BASE-T/SFP Gigabit Uplinks Per Switch
- Scalable Stack With Single IP Management
- Robust Security & L2/L3/L4 Multi-Layer QoS
- Redundant Power Supply/AC or DC Power Options

#### FEATURES

##### Flexible Choices

- 24 or 48 10/100BASE-TX Ports
- 2 Combo 1000BASE-T/SFP Gigabit Uplinks
- AC or DC Internal Power Supply for 24-Port Switch

##### xStack Integration

- Virtual Stack of Up to 32 Units
- Embedded D-Link SIM for Integration With L3 Core Gigabit Switches

##### Security

- L2/L3/L4 Multi-Layer Access Control
- External RADIUS/TACACS+ Authentication Support
- SSH/SSL Support
- D-Link Safeguard Engine
- Microsoft NAP Support
- 802.1x Guest VLAN

##### Quality of Service

- 802.1p Priority Queues/Multi-Layer CoS
- IP Multicast Support for Bandwidth-Intensive Applications

##### Traffic Monitoring/Bandwidth Control

- Traffic Segmentation
- Bandwidth Control Down to 1Mbps
- Broadcast Storm Control Down to 1pps
- 802.3ad Link Aggregation (Port Trunks)
- GUI Traffic Monitoring
- RMON v1 Support
- Port Mirroring

##### Configuration/Management

- Web-Based GUI
- Command Line Interface (CLI)
- Telnet Server
- SNMP v1, v2c, v3
- D-Link Single IP Management (SIM) v1.6
- D-View SNMP Network Management Module Provided

The DES-3500 series is a member of the D-Link xStack family of next generation switches that deliver performance, flexible expansion, robust security, multi-layer Quality of Service (QoS), Power Over Ethernet and redundant power option. Supporting D-Link's Single IP Management, these switches comprise the workgroup access-layer virtual stack for seamless integration with the L3 core Gigabit switches to form part of a multi-level network structured with high-speed backbone and centralized servers.

*Cost-Effective Virtual Stack.* The DES-3500 series forms an Ethernet workgroup stack with flexible Gigabit uplinks. Traffic running among units in this virtual stack is through the full-duplex Gigabit interfaces and your usual network wires, doing away with the costly and cumbersome stacking cables. Without any stacking cable, cable distance barrier and physical stacking limitations, your stack can comprise units that are located anywhere on the network, minimizing the impact of any single point of failure.

*Single IP Management.* The DES-3500 series simplifies and speeds up your management tasks, as multiple switches can be configured, monitored and maintained from any workstation running a web browser through one unique IP address. The stack is managed as a single object, with all units identified by a single IP address. You can see a Tree View of the members of the stack and a network topology showing the locations of the units and their link information. This simple yet powerful web-based management eliminates the need for you to install expensive SNMP network management software. You can add units to up to 32 switches per stack not limited to any specific models. With embedded Single IP Management, you can expand your Ethernet stack to include L3 core Gigabit and chassis-based switches to accommodate your network growth.

*Comprehensive Security.* The DES-3500 series provides a complete set of security features for connectivity and access control. This set includes Access Control Lists (ACLs) based on MAC address, switch port, IP address, and/or TCP/UDP port numbers, 802.1x user authentication and MAC address control. The DES-3500 also provides central management for administration access via TACACS+ and RADIUS. Together with network application control, this security ensures that not only proper user access is served, but malicious traffic is also prevented from being spread across the network.

*Enhanced Network Performance & Availability.* The DES-3500 series switches provide extensive VLAN support including GARP/GVRP, 802.1Q and asymmetric VLAN to enhance network security and performance. Bandwidth control allows you to set traffic limit for each port to control the traffic volume from the edge of the network. 802.1w Rapid Spanning Tree with network recovery of less than 15 seconds and redundant power option increase the reliability and availability of your Virtual Stack. The DES-3500 series implements a robust set of multi-layer (L2, L3, L4) QoS/CoS features to ensure that critical network services like VoIP, ERP, Intranet and video conference are served with proper priority. Priority queues for 802.1p/TOS/DiffServ are supported, with classification and marking based on MAC SA/DA, IP SA/DA, and/or TCP/UDP port numbers.



**DES-3500 Series**

**Product Specifications**

**DES-3526**

**DES-3526DC**

**DES-3550**



	DES-3526	DES-3526DC	DES-3550
<b>Interface</b>			
10/100BASE-TX Ports	24	24	48
Combo 10/100/1000BASE-T Ports/SFP Slots	2	2	2
Auto-Negotiation of Network Speeds (RJ-45 Ports)	✓	✓	✓
Auto-MDI/MDIX (RJ-45 Ports)	✓	✓	✓
RS-232 Console Port	✓	✓	✓
<b>Power</b>			
Internal Power Supply	AC to DC	DC to DC	AC to DC
Power Input	100 to 240VAC, 10A, 50 to 60Hz	48 VDC	100 to 240VAC, 10A, 50 to 60Hz
Power Output	12VDC, 5A (max.)	12VDC, 5.4A (max.)	12VDC, 5A (max.)
Power Consumption	23 watts (max.)	23 watts (max.)	40 watts (max.)
Optional Redundant Power Supply	✓	-	✓
<b>Performance</b>			
Switching Capacity	8.8Gbps	8.8Gbps	13.6Gbps
Max. 64-Byte System Packet Forwarding Rate	6.6Mpps	6.6Mpps	10.1Mpps
MAC Address Table	8K	8K	8K
Packet Buffer Size	16MB	16MB	64MB
<b>Diagnostic LEDs</b>			
10Mbps or 100Mbps Speed (Per Ethernet Port)	✓	✓	✓
10/100Mbps or 1000Mbps Speed (Per Gigabit Port)	✓	✓	✓
Link/Activity (Per Port)	✓	✓	✓
Power, Console, RPS (Per Device)	✓	✓	✓
<b>Physical/Environmental</b>			
Ventilation DC Fans	40 x 40 mm x 1	40 x 40 mm x 1	40 x 40 mm x 2
BTU/Hr.	73.8	73.1	157
Dimensions	441 x 207 x 44 mm	441 x 207 x 44 mm	441 x 309 x 44 mm
Size	19-Inch Standard Rack-Mount Width, 1U Height		
Weight	2.56 kg (5.64 lbs)	2.50 kg (5.51 lbs)	4.40 kg (9.70 lbs)
Operating Temperature	0° to 40°C		
Storage Temperature	-40° to 70°C		
Humidity	5 to 95% Non-Condensing		
EMI	FCC Class A, CE, C-Tick		
Safety	CSA International		
MTBF	53,838 Hours	133,363 Hours	49,414 Hours
Acoustic (Refer to ISO-7779)	< 34dB	< 34dB	< 43dB



## Software Functions

### VLAN

- IEEE 802.1Q Tagged VLAN
- Port-based VLAN
- GARP/GVRP
- Maximum number of VLANs per device: 255 VLANs (static and dynamic combined)

### Priority Queues (CoS)

- Standard: IEEE 802.1p
- Number of queues: 4

### Traffic Classification (CoS)

Can be based on user-definable application types:

- TOS
- Diffserv (DSCP)
- Port-based
- MAC address
- IP address
- TCP/UDP port number

### Security

- Port security (64 MAC addresses max.)
- 802.1x port-based access control
- 802.1x MAC-based access control
- SSH v1, v2
- SSL v2
- Per port traffic segmentation
- IP-MAC-port binding (512 entries)
- DHCP Client Filtering
- DHCP Server Screen
- NetBIOS Filtering
- TACACS+ authentication for management
- RADIUS authentication for management

### Access Control List

Multi-layer ACL (100 entries) based on:

- Port number
- TOS
- Diffserv (DSCP)
- MAC address
- IP address
- Packet protocol type
- TCP/UDP port number (user-definable application types)
- TCP/UDP payload (user-definable packet content)
- Per port ACL definition

### Spanning Tree Protocol

- 802.1D Spanning Tree compatible (802.1D, 2004)
- 802.1w Rapid Spanning Tree (ring protection with network recovery time of less than 15 seconds)
- Per port BPDU filter

### IP Multicast

- IGMP v1, v2
- IGMP snooping (128 groups)
- Enable definite VLAN for Multicast
- IGMP Fast Leave
- User-definable per-port IP multicast range limit

### Port Trunk

- Maximum number of ports per trunk: 8
- Maximum number of trunks per device: 6
- Operation mode: load sharing
- 802.3ad compatible Link Aggregation (LACP) static & dynamic modes on uplink and downlink ports for traffic load balance and redundancy

### Performance Enhancement Functions

- Traffic segmentation
- Bandwidth control from 1Mbps to the port's maximum rate (in steps of 1Mbps)
- Broadcast storm control: user-configurable from 1pps (packet per second)
- D-Link Safeguard Engine
- CPU interface filtering

### Management Support

- Single IP Management (SIM) v1.6
- CLI (command line interface)
- RMON v1 monitoring
- Telnet client
- Telnet server (up to 8 sessions)
- SYSLOG
- Dual Images
- Web GUI traffic monitoring
- Web-based MAC address browsing
- RFC 2030 SNTP (Simple Network Time Protocol)
- SNMP v1, v2c, v3
- Bootp/DHCP client
- DHCP relay option 82
- Loopback Detection
- Password recovery
- Three-level user account

### MIBs

- 802.1Q Q-BRIDGE-MIB (RFC 2674)
- 802.1p P-BRIDGE-MIB (RFC 2674)
- MIB-II (RFC 1213)
- Bridge MIB (RFC 1493)
- RMON MIB (RFC 1757) group 1, 2, 3, 9 (Alarm, Statistics, History, Event)
- IGMP MIB (RFC 2933)
- IF MIB (RFC 2233)
- Ethernet-like MIB (RFC 1643)
- PING-MIB and TRACEROUTE-MIB (RFC 2925)
- ICMP Ping by MIB
- Rate limiting by MIB
- Save configuration by MIB
- 802.1w setting and read by MIB
- Port interface MIB-II trap (RFC 1215)
- D-Link enterprise MIB

### Firmware Upgrade

TFTP remote upgrade

### Optional SFP Transceiver

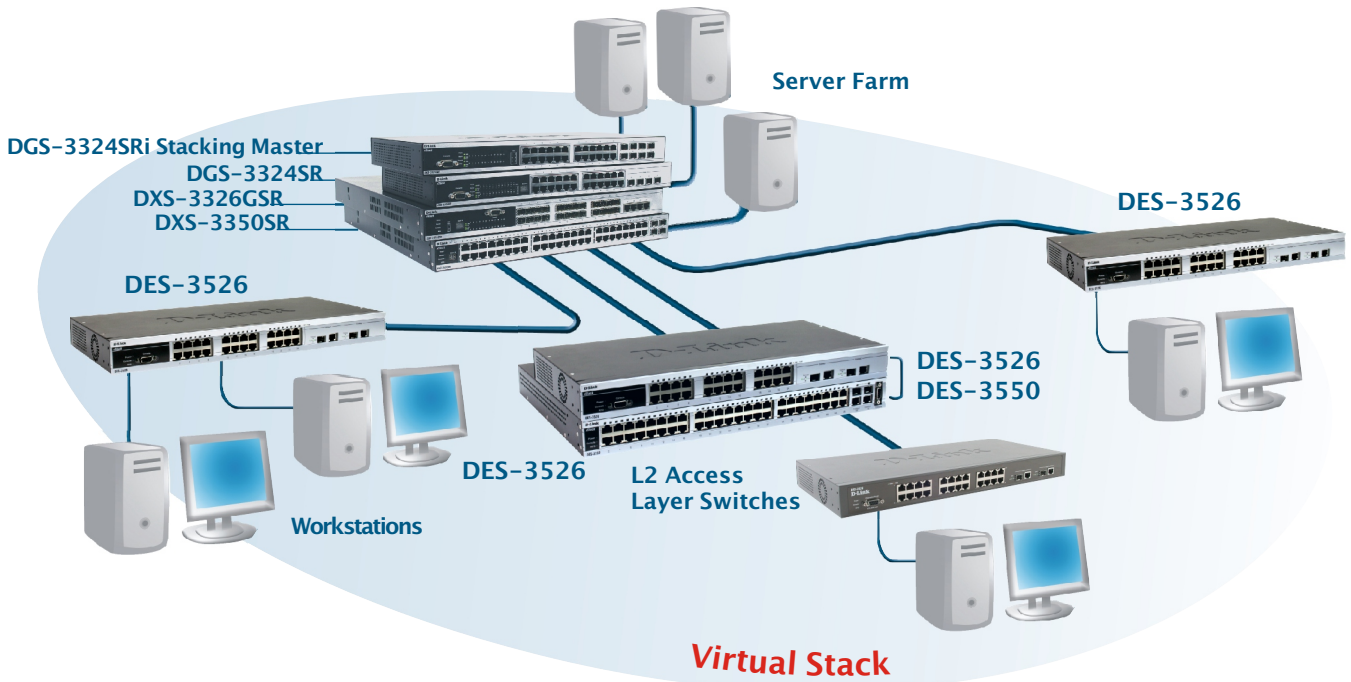
- DEM-310GT** SFP transceiver for 1000BASE-LX, single-mode fiber, max. distance 10km, 3.3V
- DEM-311GT** SFP transceiver for 1000BASE-SX, multi-mode fiber, max. distance 550m, 3.3V
- DEM-312GT2** SFP transceiver for 1000BASE-SX, multi-mode fiber, max. distance 2km, 3.3V
- DEM-314GT** SFP transceiver for 1000BASE-LHX, single-mode fiber, max. distance 50km, 3.3V
- DEM-315GT** SFP transceiver for 1000BASE-LX, single-mode fiber, max. distance 80km, 3.3V

### Optional Redundant Power Supply

- DPS-200** 60-watt redundant power supply
- DPS-800** 2-slot redundant power supply chassis
- DPS-900** 8-slot redundant power supply chassis

### Management Software

- DS-510** D-View 5.1 SNMP Network Management Program



## Stacking With Single IP Management

### D-Link Worldwide Offices

<b>U.S.A</b>	TEL: 1-800-326-1688	FAX: 1-866-743-4905	<b>Bulgaria</b>	TEL: 359 2 958 22 42	FAX: 359 2 958 65 57
<b>Canada</b>	TEL: 1-905-8295033	FAX: 1-905-8295223	<b>Romania</b>	TEL: 40(0)21 320 23 05	FAX: 40(0)21 320 23 07
<b>Europe (U. K.)</b>	TEL: 44-(0)20-8955-9000	FAX: 44-(0)20-8955-9001	<b>Singapore</b>	TEL: 65-6774-6233	FAX: 65-6774-63225
<b>Germany</b>	TEL: 49-(0)6196-77990	FAX: 49-(0)6196-7799300	<b>Australia</b>	TEL: 61-2-8899-1800	FAX: 61-2-8899-1868
<b>France</b>	TEL: 33 (0)1 30 23 86 88	FAX: 33 (0)1 30 23 86 89	<b>India</b>	TEL: 91-22-2652 6696	FAX: 91-22-2652 8914
<b>Netherlands</b>	TEL: 31-(0)10-282-1445	FAX: 31-(0)10-282-1331	<b>Middle East (Dubai)</b>	TEL: 971-4-391-6480	FAX: 971-4-390-8881
<b>Belgium &amp; Luxembourg</b>	TEL: 32(0)2 517 7111	FAX: 32(0)2 517 6500	<b>Egypt</b>	TEL: 202-291-9035	FAX: 202-291-9051
<b>Switzerland</b>	TEL: 41 (0)1 832 11 00	FAX: 41 (0)1 832 11 01	<b>Turkey</b>	TEL: 90-212-289-5659	FAX: 90-212-289-7606
<b>Austria</b>	TEL: 43 (0)1 240 27 270	FAX: 43 (0)1 240 27 271	<b>Iran</b>	TEL: 90-212-289-5659	FAX: 90-212-289-7606
<b>Sweden</b>	TEL: 46-(0)8 564 619 00	FAX: 46-(0)8 564 619 01	<b>Pakistan</b>	TEL: 92-21-454-8158	FAX: 92-21-453-5103
<b>Denmark</b>	TEL: 45-43-969040	FAX: 45-43-424347	<b>Israel</b>	TEL: 972-9-9715700	FAX: 972-9-9715601
<b>Norway</b>	TEL: 47 99 300 100	FAX: 47 22 30 90 85	<b>Latin America</b>	TEL: 56-2-5838-950	FAX: 56-2-5838953
<b>Finland</b>	TEL: 358-10 309 8840	FAX: 358-10 309 8841	<b>Brazil</b>	TEL: 55-11-2185-9300	FAX: 55-11-2185-9322
<b>Italy</b>	TEL: 39-02-2900-0676	FAX: 39-02-2900-1723	<b>South Africa</b>	TEL: 27-12-665-2165	FAX: 27-12-665-2186
<b>Spain</b>	TEL: 34 93 409 0770	FAX: 34 93 491 0795	<b>Russia</b>	TEL: 7-495-744-0099	FAX: 7-495-744-0099
<b>Portugal</b>	TEL: 351 21 8688493	FAX: 351 21 8622492	<b>Japan</b>	TEL: 81-3-5781-0963	FAX: 81-3-5781-0965
<b>Greece</b>	TEL: 30 210 9914 512	FAX: 30 210 9916902	<b>Korea</b>	TEL: 82-2-890-5491	FAX: 82-2-890-549
<b>Czech Republic</b>	TEL: 420 224 247 500	FAX: 420 224 234 967	<b>China</b>	TEL: 86-10-58635800	FAX: 86-10-58635799
<b>Hungary</b>	TEL: 36 (0)1 461 30 00	FAX: 36 (0)1 461 30 04	<b>Taiwan</b>	TEL: 886-2-6600-0123	FAX: 886-2-6600-3939
<b>Poland</b>	TEL: 48 (0)22 583 92 75	FAX: 48 (0)22 583 92 76	<b>Headquarters</b>	TEL: 886-2-6600-0123	FAX: 886-2-6600-9898

Rev. 011 (Aug. 2007)

D-Link and xStack are registered trademarks of D-Link Corporation/D-Link System Inc. All other trademarks belong to their proprietors.