

## Multi-Channel Playback

- Select multiple channels to replay video and view real-time video at the same time

## Multi-Layer E-Map

- Tracks specific locations
- Alarm status for easy and instant response when an event occurs

## Compatible with D-Link NVR

- Connect to D-Link NVR devices to view videos through Remote Live Viewer

## Intelligent Search Tool

- Narrows down your search of various past events
- Accurately search for desired footage within the selected motion mode
- Save time by selecting a period of frames from hours of video footage and watch those frames only

## Remote Desktop Viewer

- Allows remote users to use Remote Desktop Viewer to login and configure the DCS-220/230 server

## System DDNS

- Dynamic Domain Name Server (DDNS) allows users to use Live Viewer or Web Viewer to connect to the Main Console even if you have a dynamic IP address.

## SMS Alert

- Supports real-time notifications such as email and SMS

# D-ViewCam Professional/Enterprise

D-Link's D-ViewCam Professional/Enterprise is comprehensive network camera surveillance software designed for Enterprise users. It centrally manages up to 32/64 network cameras and is compatible with current D-Link network cameras and video servers. This software offers digital monitoring and recording of video, audio, and events for use in various security applications. Furthermore, this easy-to-use surveillance software provides users with a wide array of features, including video recording, playback, and live view.

## Live Monitoring & Centralized Management

D-ViewCam Professional/Enterprise is a comprehensive surveillance system designed to centrally manage up to 32/64 network cameras, while displaying real-time status information. Map Mode allows you to create maps based on camera location and orientation, and the Device Tree lists all the cameras connected to the interface for easy viewing. Additional features such as auto-patrol, rotate, zoom, and focus provide users with optimal control over their video surveillance.

## Video Recording & Playback

D-ViewCam Professional/Enterprise offers scheduled, motion, and manual recording options to meet specific user demands. Recorded files can be searched according to video type or selected within the user interface for playback, editing, or AVI /ASF file conversion.

## Event Action Configuration

Event Action provides enhanced surveillance and security by detecting events from smoke detectors, magnetic door sensors, emergency buttons, cameras, card readers, or other I/O devices. Connect any of these devices to the I/O connector of a compatible D-Link network camera. When an event occurs, a notification is immediately sent to D-ViewCam Professional/Enterprise. D-ViewCam Professional/Enterprise then notifies you either by e-mail or an audio alert.

## Video & System Database Backup

The D-ViewCam Professional/Enterprise Playback function allows users to load and play a recorded file on a Windows PC. It allows users to monitor a live feed on one computer while watching a recorded file on another. D-ViewCam Professional/Enterprise also provides a utility (DB-Tool) to reconstruct, repair or relocate the databases in a local drive or external drive. It also supports the import/export of configuration files – enabling users to synchronize surveillance settings across devices.

## Compatible with 3rd Party CMS

Central Management System (CMS) can manage an unlimited number of network cameras located worldwide, allowing simultaneous operation by unlimited workstations. CMS is considered to be the omni-solution for large-scale projects, such as defense installations, justice facilities, security companies, city surveillance, national and international enterprises. D-ViewCam Professional/Enterprise can be managed by CMS to provide a total solution.



**D-ViewCam**  
Professional



**D-ViewCam**  
Enterprise



## D-ViewCam Professional/Enterprise

### Technical Specifications

<b>General</b>	<ul style="list-style-type: none"> <li>Supports up to 32/64 cameras</li> <li>Megapixel network camera support</li> <li>MJPEG/MPEG-4/H.264 compression format support</li> <li>Dual monitor support</li> <li>Multilingual support</li> <li>OSD (On-screen Display) setting</li> <li>Live Monitoring</li> <li>30 FPS maximum recording per camera (subject to camera and video server capacity)</li> <li>Automatic discovery of network cameras</li> <li>On-the-fly configuration changes</li> <li>Auto reboot function support</li> <li>System DDNS support</li> <li>Remote Desktop Viewer</li> <li>SMS alert</li> <li>Lock system to avoid unauthorized changes</li> </ul>
<b>User Account Management</b>	<ul style="list-style-type: none"> <li>User validation</li> <li>User password restriction</li> <li>User profiling</li> <li>Access privilege control</li> </ul>
<b>Recording</b>	<ul style="list-style-type: none"> <li>Supports multiple storage locations</li> <li>Record by schedule</li> <li>Record by event</li> <li>Digital watermark protection</li> <li>Pre-record/Post-record support</li> <li>Manual recording of up to 32/64 channels</li> <li>One-way audio recording of multiple channels</li> <li>Record and live display at different frame rates and resolutions</li> </ul>
<b>Data Search and Playback</b>	<ul style="list-style-type: none"> <li>Video playback control</li> <li>Intelligent Search Tool</li> <li>Histogram quick search method for videos</li> <li>Video stamp</li> <li>Extract snapshots from video</li> <li>Extract video to AVI /ASF</li> <li>Supports remote playback/web playback</li> </ul>
<b>Video Mode</b>	<ul style="list-style-type: none"> <li>Screen division layout support</li> <li>Monitor display allows for drag and drop of videos</li> <li>Supports full screen video</li> <li>Multiple channel playback support</li> <li>Information window support</li> <li>Enable Move function to control a P/T/Z camera</li> <li>Digital zoom in/out support</li> <li>Supports remote live viewing to display video</li> </ul>



## D-ViewCam Professional/Enterprise

### Technical Specifications

Map Mode	<ul style="list-style-type: none"> <li>Multiple map support</li> <li>Alarm notification</li> <li>Customized map background support</li> <li>Camera preview</li> <li>Camera and I/O indicator</li> </ul>
I/O & Event Feature	<ul style="list-style-type: none"> <li>Output port control</li> <li>Input port trigger on event</li> <li>Output port relay when an event is detected</li> <li>Digital Input Trigger SMS</li> <li>Digital Input Trigger CMS</li> <li>E-mail notifications</li> </ul>
P/T/Z Control	<ul style="list-style-type: none"> <li>Manual control</li> <li>Preset positions (device dependent)</li> <li>Preset patrolling</li> <li>Multiple patrol group support</li> </ul>
Backup	<ul style="list-style-type: none"> <li>Backup database for logs and videos</li> <li>Import/Export configuration</li> <li>DB tool</li> <li>Burn backup files to DVDs on Windows XP</li> </ul>
Compatibility	<ul style="list-style-type: none"> <li>Compatible with D-Link NVR</li> <li>Compatible with 3rd Party CMS</li> <li>All D-Link network cameras (visit <a href="http://www.dlink.com">www.dlink.com</a> for more information)</li> </ul>

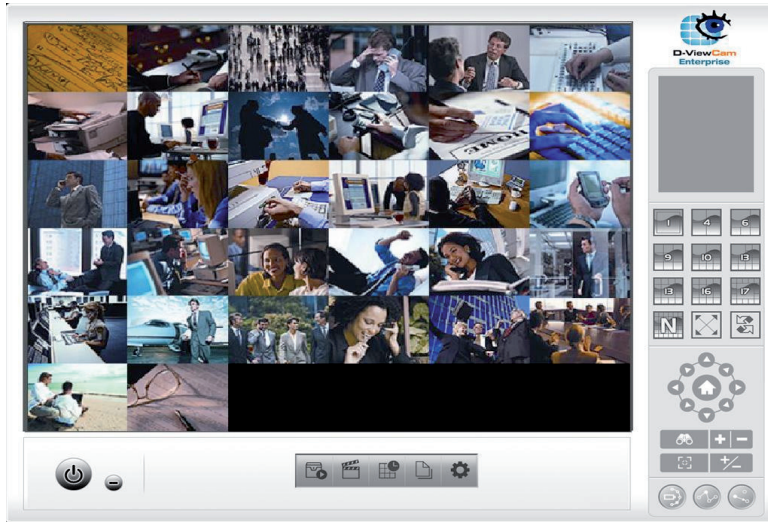
### Minimum System Requirements

These minimum system requirements ensure that the D-ViewCam Professional/Enterprise can maintain high performance video during monitoring and recording. A higher performance system is required especially when the number of FPS exceeds 2200 CIF resolution.

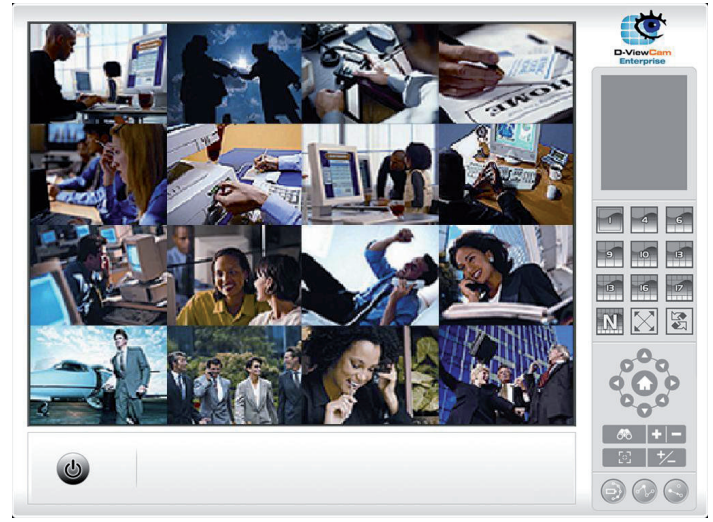
Total FPS at CIF	2200~1400	1400~1050	1050~550	550~0
CPU	Intel Core 17	Intel Core 15	Intel Core 2 Quad Q9400	Intel Core 2 Duo E5300
RAM	2 GB	2 GB	2 GB	1 GB
Motherboard	Intel 55 or 57 chip or above, MB vendor: Asus, Gigabyte or Intel with Intel Chipset recommended		Intel 35 or 33 chip or above, MB vendor: Asus, Gigabyte or Intel with Intel Chipset recommended	
Display Card	ATI Radeon 4650 , nVIDIA GeForce GF-9600 or above (ATI recommended)			
Ethernet	100 baseT or above, Gigabit LAN recommended			
Hard Disk*	250 GB or above			
OS	MS Windows XP pro SP3 / 2003 / Vista SP1			

\* Recording video over a long period of time will consume large amounts of disk space. Make sure that you have enough disk space if you want to use the recording function.

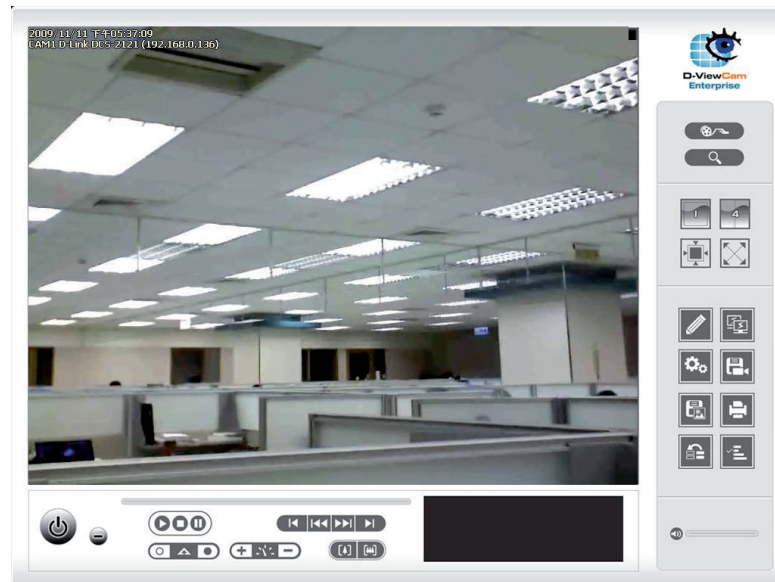
## Live View Display (Dual Console Support)



Main Console



Secondary Console



Video Playback

## Network Setup Using D-ViewCam Professional/Enterprise Software

